

„Boom“ for MIMI®: Champions (R)Evolution® and WIN!®

Authors: Dr. Med. Dent. Armin Nedjat and MDT Norbert Bomba

Translation: Celina Jelonek

For almost two decades, MIMI® has been known as a patient-friendly and periost protecting implant and prosthodontic treatment: don't confuse MIMI®, the Minimally Invasive Method of Implantation, with so-called Mini implants, which are made from Grade 5-titanium and which have an implant diameter that is smaller than 2.9 mm.

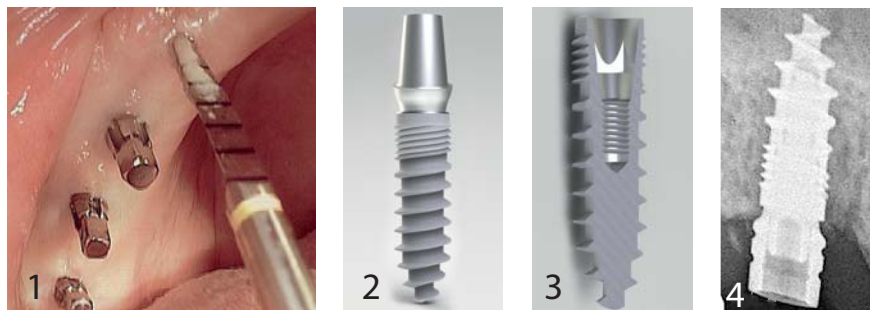
In recent years, the Champions® implant treatment according to the MIMI® method has been very successful (Champions®-Implants GmbH is the winner of the German „Regio Effekt Award 2010“). However, if necessary, you can also insert the Champions® implants according to the classical implantation method and perform augmentations. The Champions®

„Hexadapter“. The implant with the „Shuttle“ only costs 59 Euros. The sterile „Shuttle“ is tightened on the implant to a torque of only 10 Ncm. The „Shuttle“ stays on the implant and serves as healing cap. When inserting the Shuttle, the inner part of the implant is very well protected. In this way, there is very little risk of abutment screw loosening. The implant can achieve primary stability

Our number one priority are the patients, and we strive to give them the best quality service and to provide them with high-quality and affordable implant-supported prosthodontic restorations „Made in Germany“. More patients can now afford excellent implant-supported prosthodontic restorations...

– the treatment with this implant system has been very successful.

Pictures taken with an intraoral camera

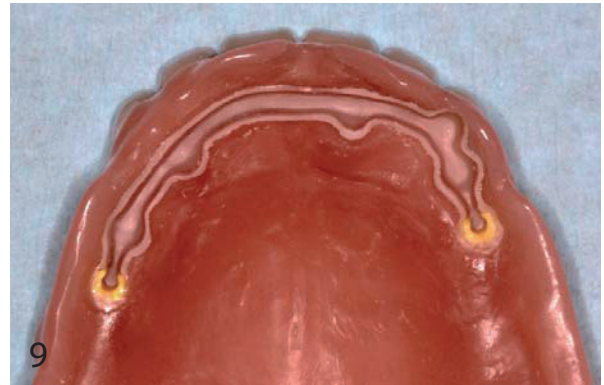


implants are manufactured from Grade 4-titanium in a known production site in Germany. They are sold directly by the manufacturer. Recent studies, including a study at the university clinic in Cologne in Germany and studies in the United States, have shown that the surface of the Champions® implant system is one of the best on the market. Innovative features from the practice for the practice will (r) evolutionize Dental Technology. The two-piece Champions (R)Evolution® implants have a rotation-proof inner conus with an integrated patented

at a torque up to 70 Ncm without the risk of an implant deformation and fracture during and after the insertion (Fig. 1 - 4).

Last year, more than 50.000 Champions® implants were successfully inserted in Germany. Thanks to its excellent price-performance ratio and its unbeatable innovative features – such as cementable „Prep-Caps“ and the implantation prosthodontic procedure with the one-piece Champions® as well as the two-piece Champions (R)Evolution® implants

Our high-quality prosthodontic restorations are manufactured in Germany. At present, there are 40 certified master dental laboratories. Advertisements and patient information are published in the newspaper „Die WELT“ on Saturdays and on Sundays and also in health magazines, and they cost more than 240.000 Euros. Abutments (can be prepared, at 0 degrees or on a bonding basis) are sold to certified laboratories for only 19 Euros so that they can be prepared. CEO Dr. Armin Nedjat said, „Our patients are our number one priority, and we strive to give them the best quality service and



to provide them with high-quality and affordable implant-supported prosthodontic restorations 'Made in Germany'. More patients can now afford excellent implant-supported prosthodontic restorations, without reducing salaries of dentists and dental technicians!"

WIN!® – A Step Forward for Dental Technology

New biocompatible synthetic WIN!® material, exclusively available in Germany, is now used in the dental laboratories, including the dental laboratory of CEO MDT Norbert Bomba. WIN!® has originated from Orthopedic Surgery and has now been further developed and approved for Dentistry and Dental Technology. It has now been patented. This type of

material has been used in Orthopedic Surgery for more than 30 years. It is very biocompatible (like zircon), and it is dimensionally stable without any loss of friction. For instance, it can be used for telescope and bar-supported restorations (Fig. 5 - 9).

MDT Bomba said, „First, we have been looking for an alternative for galvanization, but we have noticed the material characteristics of the WIN!® material. With this material, you can manufacture primary bars and the metal clasp dentures („MEG“). In addition, this material can be CAD/CAM processed. We have worked on this material two years in advance compared to other procedures and materials. WIN! is not Teflon, not PEEK and no other (thermo-formed)

synthetic material, but it is synthetic material that has not been used in Dentistry before. WIN!® is a big step forward for Dental Technology! That's for sure!“ (see Fig. 10 to 12).

Contact:

MDT Norbert Bomba
Champions-Innovations GmbH
 Bornheimer Landstraße 8
 D-55237 Flonheim
 Tel +49 (0) 67 34 - 91 40 80
 Fax +49 (0) 67 34 - 10 53
 info@champions-implants.com
 www.champions-implants.com

